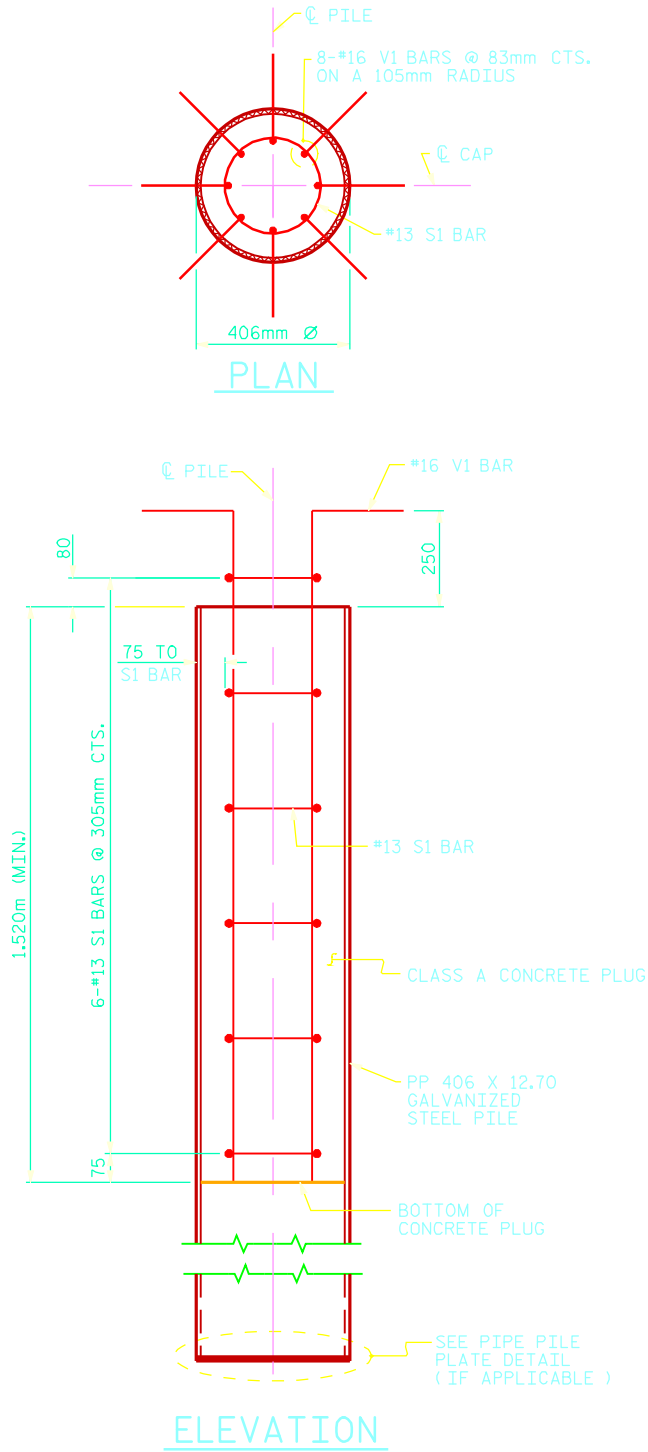
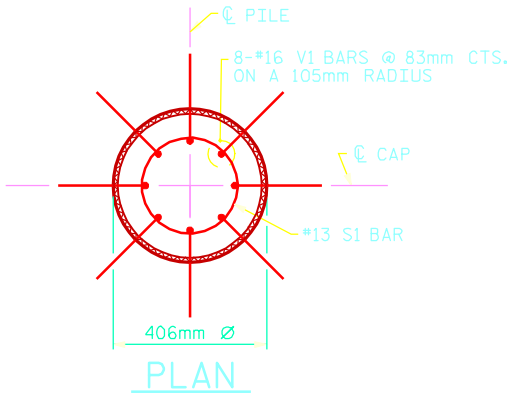


|                |     |        |                    |
|----------------|-----|--------|--------------------|
| ASSEMBLED BY : |     | DATE : |                    |
| CHECKED BY :   |     | DATE : |                    |
| DRAWN BY :     | TLA | 8/05   | ADDED 10/1/05      |
| CHECKED BY :   | GM  | 9/05   | REV. 5/1/06 TLA/GM |

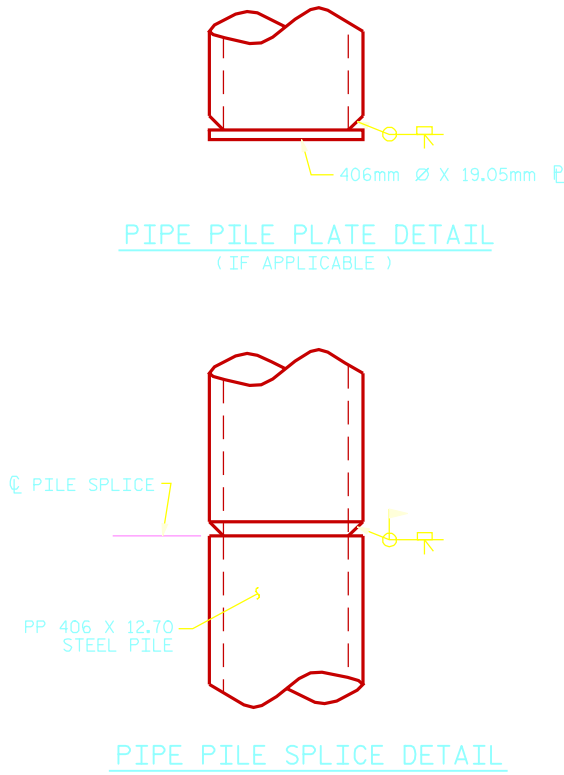
PP 406 X 12.70 GALVANIZED STEEL PILE  
( OPEN OR CLOSED END )



ELEVATION



PLAN



PIPE PILE PLATE DETAIL  
( IF APPLICABLE )

PIPE PILE SPLICE DETAIL

NOTES

STEEL PIPE PILES SHALL BE OF UNIFORM DIAMETER AND MEET THE REQUIREMENTS OF ASTM A252, GRADE 3 MODIFIED (344.7 MPa YIELD STRENGTH).

GALVANIZE STEEL PIPE PILES IN ACCORDANCE WITH SECTION 1076 OF THE STANDARD SPECIFICATIONS UNLESS METALLIZING IS REQUIRED. GALVANIZING OR METALLIZING PIPE PILE PLATES IS NOT REQUIRED.

REMOVE AND REPLACE OR REPAIR TO THE SATISFACTION OF THE ENGINEER PILES THAT ARE DAMAGED, DEFORMED OR COLLAPSED DURING INSTALLATION OR DRIVING.

PILE SPLICES SHALL BE IN ACCORDANCE WITH THE STANDARD SPECIFICATIONS AND AWS D1.1.

FOR CLOSED END PIPE PILES, REMOVE ALL SOIL AND WATER FROM INSIDE THE PILES JUST PRIOR TO PLACING REINFORCING STEEL AND CONCRETE FOR THE CONCRETE PLUG.

FOR OPEN END PIPE PILES, REMOVE ENOUGH SOIL AND WATER FROM INSIDE THE PILES TO CONSTRUCT THE CONCRETE PLUG WITHOUT FOULING THE CONCRETE.

FORM THE CONCRETE PLUG SUCH THAT THE REINFORCING STEEL OR CONCRETE DOES NOT MOVE AND THE CLEARANCE FROM THE REINFORCING STEEL TO THE INSIDE OF THE PILE IS MAINTAINED AFTER CONCRETE PLACEMENT. DO NOT PLACE CONCRETE IN THE BENT CAP UNTIL THE CONCRETE PLUG HAS ATTAINED A MINIMUM COMPRESSIVE STRENGTH OF 10.3 MPa.

THE REINFORCING STEEL, CLASS A CONCRETE, GALVANIZING, AND THE PIPE PILE PLATES, IF REQUIRED, ARE CONSIDERED INCIDENTAL TO THE CONTRACT UNIT PRICE BID PER METER FOR PP 406 X 12.70 GALVANIZED STEEL PILES.

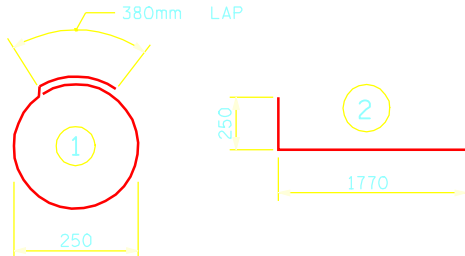
BILL OF MATERIAL FOR ONE  
PP 406 X 12.70 STEEL PILE

| BAR                 | NO. | SIZE | TYPE | LENGTH | WEIGHT |
|---------------------|-----|------|------|--------|--------|
| S1                  | 6   | #13  | 1    | 1180   | 7      |
| V1                  | 8   | #16  | 2    | 2020   | 25     |
| REINFORCING STEEL = |     |      |      | 32     | kg     |

CLASS A CONCRETE

1.520m MINIMUM PLUG 0.2 CU. METER

BAR TYPES



ALL BAR DIMENSIONS ARE OUT TO OUT.

PROJECT NO. \_\_\_\_\_  
COUNTY \_\_\_\_\_  
STATION: \_\_\_\_\_

|  |     |       |     |     |              |
|--|-----|-------|-----|-----|--------------|
| STATE OF NORTH CAROLINA<br>DEPARTMENT OF TRANSPORTATION<br>RALEIGH |     |       |     |     |              |
| STANDARD<br>406mm STEEL<br>PIPE PILE                               |     |       |     |     |              |
| REVISIONS  |     |       |     |     |              |
| NO.  | BY: | DATE: | NO. | BY: | DATE:        |
| 1  |     |       | 3   |     |              |
| 2  |     |       | 4   |     |              |
| SHEET NO.  |     |       |     |     | TOTAL SHEETS |

STD. NO. SPP2SM